

2020 Highlander



 Let's
Go
Places

DEP
DEALER PROCESS

Be the center of your world.

When your life revolves around more than just family, the all-new 2020 Toyota Highlander is ready to take on whatever you've got, all while bringing more refinement to the daily drive. And thanks to the Toyota New Global Architecture (TNGA) platform, Highlander can seat up to eight while providing greater capability, comfort and safety than ever before. Whatever your life requires, there's a Highlander that will fit your needs. With the choice between two advanced powertrains, a gas V6 or a fuel-efficient hybrid, and All-Wheel Drive availability for further peace of mind — it's time to take your drives to the next level.



Always drive safely and obey traffic laws.



Left to right: **Platinum AWD** shown in Moon Dust;⁶⁸ **Platinum Hybrid AWD** shown in Ruby Flare Pearl.⁶⁸

See numbered footnotes in Disclosures section.

DEP
DEALER ePROCESS



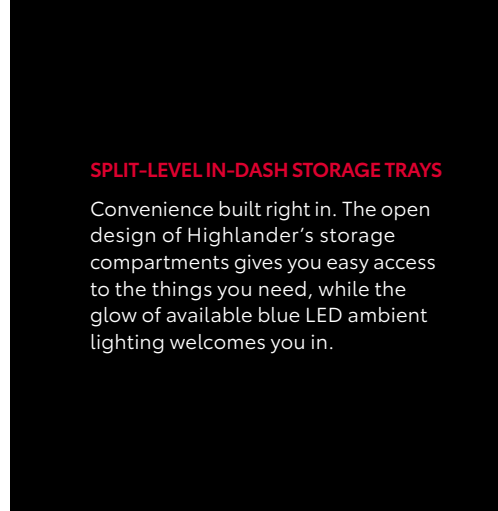
Up the ante on comfort.

The all-new Highlander is ready to elevate every moment with its plush, modern interior. Up front, the sculpted dash features an available, best-in-class 12.3-in. touch-screen display.⁶⁹ Here, you can easily access a variety of Highlander's systems with an intuitive touch.⁷⁰ And from every seat, quality is always within reach. Soft-touch surfaces and premium materials throughout add another level of sophistication to help create more unforgettable memories for you and your crew.



GLAZED CARAMEL INTERIOR

Inside Highlander Platinum, quality is taken to another level. Exclusive to this trim is a Glazed Caramel leather-trimmed interior. The rich brown leather covers the seats, dash and door panels — enhancing every drive with a quality you can feel.



SPLIT-LEVEL IN-DASH STORAGE TRAYS

Convenience built right in. The open design of Highlander's storage compartments gives you easy access to the things you need, while the glow of available blue LED ambient lighting welcomes you in.



PANORAMIC MOONROOF

Brighten each day with an available panoramic roof with a front tilt/slide moonroof. Enjoy the wide-open view or easily block it out with a power-retractable sunshade.



PREMIUM INTERIOR



Platinum interior shown in Harvest Beige leather trim. Always drive safely and obey traffic laws.

DEP
DEALER ePROCESS

Take the lead, in style.

Highlander's dynamic new design will turn heads wherever you're headed. Expanded fender flares accentuate its wider stance, while muscular character lines run all the way from the hood to the rear taillights to help define its exceptional good looks. Platinum's black front grille with chrome surround ups the styling game with a sleekness that adds to its overall modern design. So when you're pursuing your own passion or one that's shared, find inspiration every time you look at Highlander.

LED HEADLIGHTS

The prominent front end of Highlander shows off its unique look. The stylish standard LED headlights provide a crisp, clean light, while available auto-leveling LED projector-beam headlights help keep light aimed down at the road for better visibility.



20-IN. WHEELS

Highlander's all-new design introduces its first-ever 20-in. alloy wheels. Available on Limited and Platinum, these stylish wheels add more sophistication without compromising performance.

HANDS-FREE POWER REAR LIFTGATE⁶

Easy to use and even more convenient. When your hands are full, Highlander's available hands-free power liftgate senses your Smart Key fob² and opens automatically when you wave your foot under the rear bumper.⁶³



EXTERIOR STYLING



Platinum AWD shown in Moon Dust.⁶⁸

See numbered footnotes in Disclosures section.



Push the boundaries of your comfort zone.

Whether you're hustling around town or venturing out to see what nature has to offer, you'll enjoy Highlander's impressive ride comfort. Its high-strength TNGA platform provides Highlander with a stiff frame for a smooth and quiet ride. Take all-wheel-drive capability to the next level with available Dynamic Torque Vectoring All-Wheel Drive. This intelligent system improves responsiveness and stability by sending power to the wheel that needs it most. So wherever you're going, you'll have more confidence down every path you take.



MULTI-TERRAIN SELECT AND DYNAMIC TORQUE VECTORING AWD

Offering you more capability when the pavement ends, Highlander features Multi-Terrain Select on gas All-Wheel Drive models. Choose between four modes (MUD & SAND, ROCK & DIRT, SNOW and NORMAL) for improved traction. Available Dynamic Torque Vectoring All-Wheel Drive improves responsiveness and stability by sending up to 50 percent of the power to the rear and then further distributing more power to the wheel that needs it.

3.5L V6 ENGINE

The epitome of power and smoothness. Highlander's advanced 3.5-liter V6 engine produces 295 hp and 263 lb.-ft. of torque, and gets up to an EPA-estimated 24 mpg combined⁶⁶ And when adventures require more, take advantage of its impressive towing capacity of up to 5000 lbs⁶⁴



PERFORMANCE



Platinum AWD shown in Moon Dust.⁶⁸
See numbered footnotes in Disclosures section.

DEP
DEALER ePROCESS

Driven to do it all.

From a night out to a day trip beyond city limits, Highlander Hybrid is ready to take on every challenge. A responsive 4-cylinder gas engine with two electric motors gets you to more places with a best-in-class, manufacturer-estimated 35 combined mpg.⁷¹ Even everyday commutes have been designed with fuel efficiency in mind. The more you drive, the more Predictive Fuel-Efficient Drive⁶⁰ learns your routine stopping patterns to charge and discharge the hybrid battery more effectively.



FRONT-WHEEL DRIVE OR ALL-WHEEL DRIVE HYBRID DRIVETRAIN

For the first time, Highlander Hybrid now gives you the choice between front-wheel-drive or all-wheel-drive performance. Front-Wheel Drive maximizes efficiency, while All-Wheel Drive uses a separate electric motor for the rear wheels, to give you extra traction when needed.

BEST-IN-CLASS

35

ESTIMATED COMBINED MPG⁷¹



HYBRID DRIVE MODES

Highlander Hybrid offers four selectable driving modes that let you choose how it performs. Normal for everyday driving, ECO for maximum efficiency, Sport for improved acceleration, and an EV Mode,⁷² which allows electric-only driving at low speeds for short distances.



HYBRID PERFORMANCE



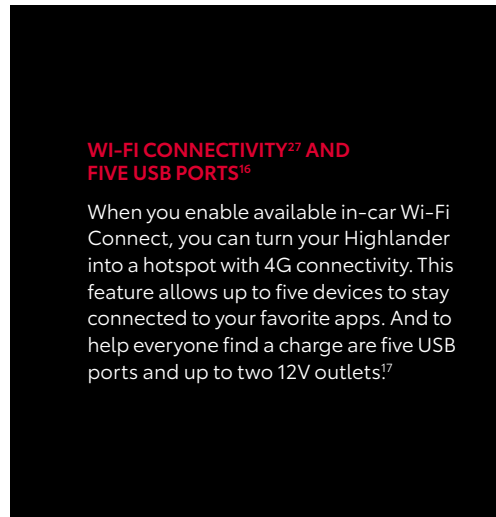
Platinum Hybrid AWD shown in Ruby Flare Pearl.⁶⁸

Do not overload your vehicle. See Owner's Manual for weight limits and restrictions. Always properly secure cargo and cargo area. See numbered footnotes in Disclosures section.



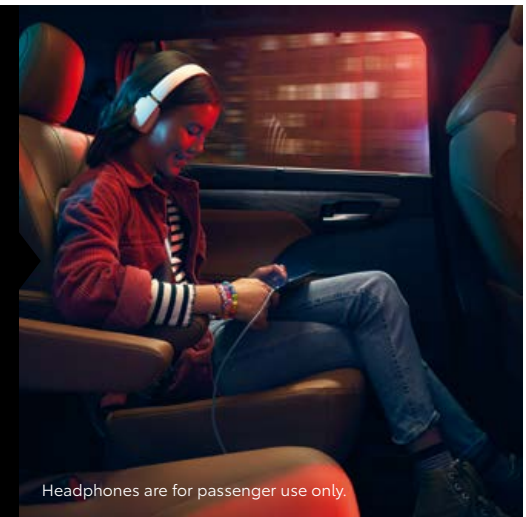
Focused on you.

Bring along more fun on every adventure. With the help of Highlander's available best-in-class 12.3-in. touch-screen display,⁶⁹ you'll always be in control of what's next. It's as simple as connecting your iPhone^{®73} with standard Apple CarPlay^{®19} for a more personalized experience. Or pair your Android^{™74} smartphone to take advantage of standard Android Auto.^{™18} It's convenience that comes naturally and raises the bar on every drive.



WI-FI CONNECTIVITY²⁷ AND FIVE USB PORTS¹⁶

When you enable available in-car Wi-Fi Connect, you can turn your Highlander into a hotspot with 4G connectivity. This feature allows up to five devices to stay connected to your favorite apps. And to help everyone find a charge are five USB ports and up to two 12V outlets.¹⁷



Headphones are for passenger use only.



SIRIUSXM^{®22} ALL ACCESS 3-MONTH TRIAL²³

SiriusXM[®] is playing what you want to hear. You get to try the widest variety of entertainment anywhere when you purchase a vehicle equipped with SiriusXM[®]. Just hit the button and start listening — it's an experience like no other.²⁰ Choose from over 200 channels in your vehicle, including ad-free music, plus sports, news, talk, comedy and more.



JBL^{®39} AUDIO SYSTEM

Experience the clear sound of Highlander's available JBL[®] w/Clari-Fi^{®39} audio system. With its 1200 watts, 11 speakers, surround sound, and high-quality hardware, software and structural engineering, phenomenal sound is delivered to amp up every drive.





Platinum interior shown in Harvest Beige leather trim. Apple CarPlay^{®19} shown.

See numbered footnotes in Disclosures section.



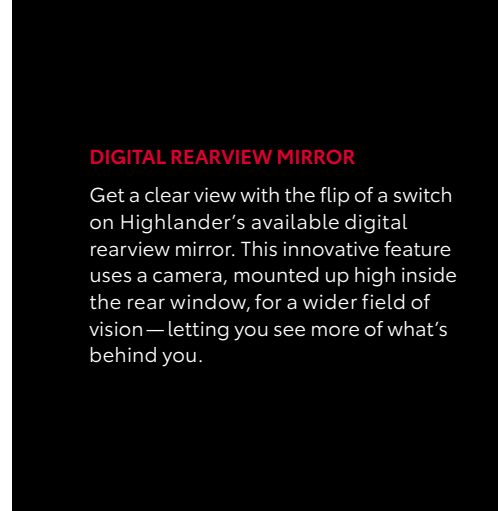
Smarter moves made effortless.

Enjoy Highlander's intelligent conveniences that help make every day as easy as possible. It's all about the little things, like unlocking your door when you're nearby, to giving you access to smart devices at home. And when you're exploring new territory, have no fear. Available Dynamic Navigation³⁴ provides you with the most up-to-date map data, routes and points of interest. Just set your destination and get ready to take in what the drive has to offer.



AMAZON ALEXA²⁰ COMPATIBILITY

Almost anywhere the road takes you, standard Amazon Alexa follows. With a smartphone connection and the Toyota+Alexa app, all you have to do is ask Alexa to play music, hear the news, check weather, control smart-home devices and more.⁷⁰



DIGITAL REARVIEW MIRROR

Get a clear view with the flip of a switch on Highlander's available digital rearview mirror. This innovative feature uses a camera, mounted up high inside the rear window, for a wider field of vision — letting you see more of what's behind you.



SMART KEY SYSTEM²

No need to reach for your keys with Highlander's standard Smart Key System. When Highlander senses you are near the vehicle, you can unlock the doors by grabbing the handles on the front doors or liftgate.



TECHNOLOGY



Limited interior shown in Graphite leather trim.

DEP
DEALER ePROCESS

Peace of mind. Standard.

Highlander is full of safety features that add up to a more confident drive. Get in and out of the tightest spots with ease, thanks to Highlander's available Front and Rear Parking Assist with Automated Braking.⁵⁹ This system is designed to warn you when it detects nearby obstacles, and, if necessary, will reduce engine power and apply the brakes. When vehicles are detected, the system uses alerts and brake control to help minimize damage or even help you avoid a possible collision. And to help you make sure the coast is clear, an available Bird's Eye View Camera¹⁵ with Perimeter Scan provides a 360-degree view around Highlander.



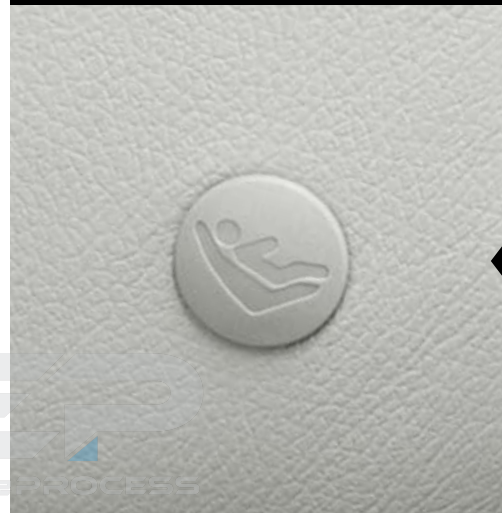
BLIND SPOT MONITOR³ WITH REAR CROSS-TRAFFIC ALERT⁵⁶

The available Blind Spot Monitor is designed to warn you when a vehicle in the next lane enters Highlander's blind spot on either side of the vehicle. Available Rear Cross-Traffic Alert works when Highlander is in Reverse to help detect vehicles approaching from either side. If the system senses cross traffic, it warns you with side mirror indicators and a warning tone.

EIGHT AIRBAGS⁴⁸

An Advanced Airbag System helps protect you and your family with driver and front passenger dual stage airbags, driver and front passenger seat-mounted side airbags, a driver knee airbag, a front passenger seat-cushion airbag and Roll-sensing Side Curtain Airbags for all rows.

8
airbags



LATCH

To help keep children safe and secure, Highlander has LATCH, which stands for "Lower Anchors and Tethers for CHildren." With lower anchors on the outboard rear seats and a tether anchor on the rear center seat, LATCH allows you to securely mount a child seat quickly and easily.



SAFETY



Left to right: **Platinum Hybrid AWD** shown in Ruby Flare Pearl;⁶⁵ **Platinum AWD** shown in Moon Dust.⁶⁶ Simulation shown.

See numbered footnotes in Disclosures section.

DEP
DEALER ePROCESS



Designed for safety.

Toyota Safety Sense™ 2.0 (TSS 2.0)⁴⁰ is a bundle of active safety features standard on every 2020 Highlander and 2020 Highlander Hybrid. These innovative features are designed to help protect you and your passengers from harm.



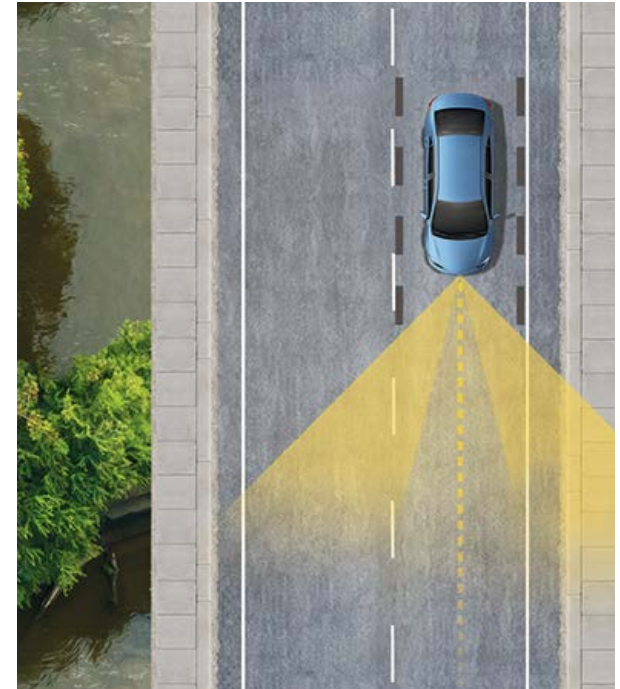
PRE-COLLISION SYSTEM WITH LOW-LIGHT PEDESTRIAN DETECTION⁴¹

Pre-Collision System with Pedestrian Detection (PCS w/PD) is designed to help keep the road safe by detecting a vehicle, pedestrian or bicyclist in certain situations. The latest system has enhanced low-light capabilities for pedestrian detection. By combining millimeter-wave radar with a camera capable of shape recognition, the system provides an audio/visual alert, warning you of a possible collision under certain circumstances. If you don't react, the system is designed for automatic braking support to help mitigate the potential for a collision.



LANE DEPARTURE ALERT WITH STEERING ASSIST¹²

Using Road Edge Detection or by detecting visible lane markings, Lane Departure Alert with Steering Assist (LDA w/SA) is designed to issue both an audible alert and visual warning on the MID screen if an inadvertent lane departure is detected at speeds above 32 mph. If the system determines that the driver is not taking corrective steering action, the Steering Assist function is designed to initiate and provide gentle corrective steering to help keep the vehicle in the lane.



LANE TRACING ASSIST⁴²

When the available Full-Speed Range Dynamic Radar Cruise Control (DRCC)¹¹ is enabled and lane markers are detectable, Lane Tracing Assist (LTA) uses the lines on the road and/or preceding vehicles to help keep the vehicle centered while also displaying the vehicle's position on the MID screen. The system is designed to help reduce driver strain and increase convenience, and may benefit drivers most during traffic jams — but can be turned off using the MID.





FULL-SPEED RANGE DYNAMIC RADAR CRUISE CONTROL¹¹

Intended for highway use and similar to “constant speed” cruise control, available Full-Speed Range Dynamic Radar Cruise Control (DRCC) (unavailable on manual transmissions) lets you drive at a preset speed. DRCC uses vehicle-to-vehicle distance control, which is designed to adjust your speed, to help you maintain a preset distance from the vehicle ahead of you that is driving at a slower speed. DRCC uses a front-grille-mounted radar and an in-vehicle camera designed to detect vehicles and their distance. If a driver is traveling slower than you, or within your preset range, DRCC is designed to automatically slow your vehicle down without deactivating cruise control. If DRCC determines you need to slow down more, an audio and visual alert notifies you and brakes may be applied. When there’s no longer a vehicle driving slower than your preset speed in front of you, DRCC will then accelerate to the preset speed and regular cruise control will resume.



AUTOMATIC HIGH BEAMS⁴³

The Automatic High Beams (AHB) feature is a safety system designed to help you see more clearly at night — without distracting other drivers. Designed to activate at speeds above 25 mph, AHB relies on an in-vehicle camera to help detect the headlights of oncoming vehicles and taillights of preceding vehicles, then automatically toggles between high and low beams accordingly to provide the appropriate amount of light. By using high beams more frequently, the system may allow for earlier detection of pedestrians and obstacles.



ROAD SIGN ASSIST¹³

Road Sign Assist (RSA) is designed to help keep the road safe. Using a forward-facing intelligent camera, Road Sign Assist is designed to detect speed limit signs, stop signs, yield signs and Do Not Enter signs, and display them on the MID.



Open up the possibilities.

Highlander's interior is as versatile as your life demands. Available leather-trimmed seating and its unique perforation pattern add sophistication to the interior. When you're filling it up with your crew, available second-row captain's chairs give them first-class treatment, while bench seating maximizes seating for up to eight. And for when you need to put a premium on cargo space, all rear seats fold flat to open up to 84.3 cu. ft. of space.⁶³ So whoever, wherever, whenever: Highlander is ready to take on whatever you've got.

THIRD-ROW SEATING

Highlander's roomy interior gives you enough space to seat up to eight and provides impressive leg room, even for those in back.



CENTER CONSOLE WITH QI WIRELESS CHARGING⁷

No wires? No worries. Highlander features available Qi-compatible wireless smartphone charging. Simply place your device on the charging pad in the center console to easily charge it up.



HEATED AND VENTILATED SEATS

Make every seat more comfortable. Available heated and ventilated front seats cool down or warm up on demand, while available heated second-row seats can help keep passengers warm.



Simulation shown.



COMFORT AND UTILITY



Platinum Hybrid interior shown in Glazed Caramel leather trim.⁶³

See numbered footnotes in Disclosures section.

DEP
DEALER ePROCESS

HIGHLANDER MODELS



L

Powertrain

- 3.5-liter V6 engine with 295 hp @ 6600 rpm
- Direct shift-8AT (8-speed Electronically Controlled automatic Transmission)
- Available All-Wheel Drive (AWD) with Multi-Terrain Select

Exterior Features

- Smart Key System² with Push Button Start
- LED headlights
- LED taillights and stop lights
- 18-in. alloy wheels with temporary spare
- Color-keyed heated power outside mirrors with turn signal and manual folding feature
- Rear camera washer

Interior Features

- Three-zone automatic climate control
- 8-passenger seating
- Soft-touch roll-top center console with removable utility tray
- Five USB ports¹⁶ and two 12V outlets¹⁷
- 8-way power-adjustable driver's seat
- 4-way manual-adjustable front passenger seat
- Second- and third-row 60/40 split, sliding and reclining fold-flat seating
- 4.2-in. color LCD Multi-Information Display (MID)
- Audio with six speakers, 8-in. touch-screen, Android Auto^{TM18} & Apple CarPlay^{®19} & Amazon Alexa²⁰ compatibility, SiriusXM^{®22} All Access 3-month trial²³ and Wi-Fi connectivity²⁷

Safety Features

- Toyota Safety SenseTM 2.0 (TSS 2.0)⁴⁰
- Safety Connect^{®25}
- Eight airbags⁴⁸
- Rear-seat reminder



LE

Adds to or replaces features offered on L

Exterior Features

- Color-keyed heated power outside mirrors with turn signal and blind spot warning indicators³ and manual folding feature
- LED fog lights
- Height-adjustable power liftgate with jam protection

Interior Features

- Leather-trimmed shift knob and steering wheel
- Audio Plus with six speakers, 8-in. touch-screen, and Android Auto^{TM18} & Apple CarPlay^{®19} & Amazon Alexa²⁰ compatibility
- Blind Spot Monitor (BSM)³ with Rear Cross-Traffic Alert (RCTA)⁵⁶

Safety Features

- Toyota Safety SenseTM 2.0 (TSS 2.0)⁴⁰
- Safety Connect^{®25}
- Eight airbags⁴⁸



XLE

Adds to or replaces features offered on LE

Exterior Features

- 18-in. machined-finish alloy wheels with temporary spare
- Power tilt/slide moonroof with sunshade
- Roof rails

Interior Features

- Qi-compatible wireless smartphone charging⁷
- Auto-dimming rearview mirror with HomeLink^{®8} universal transceiver
- SofTex^{®9}-trimmed front- and second-row seats with heated front seats
- 7-in. color LCD Multi-Information Display (MID)
- 10-way power-adjustable driver's seat including power lumbar support
- 4-way power-adjustable front passenger seat
- 7- or 8-passenger seating with 60/40 split, fold-flat third-row seats
- Second-row sunshades

Safety Features

- Toyota Safety SenseTM 2.0 (TSS 2.0)⁴⁰
- Safety Connect^{®25}
- Eight airbags⁴⁸

Options

- Premium Audio: 8-in. touch-screen, Dynamic Navigation³⁴ with 3-year trial³⁵ Destination Assist³⁷ with 1-year trial³⁸
- Seating for eight; second-row bench seat with 60/40 split fold seats





Limited

Adds to or replaces features offered on XLE

Powertrain

- Available Dynamic Torque Vectoring All-Wheel Drive (AWD) and Multi-Terrain Select with dial

Exterior Features

- Color-keyed heated power outside mirrors with puddle lights with integrated Highlander logo, turn signal, blind spot warning indicators³ and memory feature
- LED projector headlights with LED-strip Daytime Running Lights (DRL)
- High-output LED fog lights
- 20-in. chrome wheels with temporary spare
- Hands-free power liftgate with jam protection⁶

Interior Features

- Leather-trimmed front- and second-row seats with heated and ventilated front seats
- Seat memory function
- Heated steering wheel
- Integrated backup camera⁵ with dynamic gridlines
- Premium Audio with Dynamic Navigation,³⁴ JBL[®] w/Clari-Fi^{®39} and Android Auto^{TM18} & Apple CarPlay^{®19} & Amazon Alexa²⁰ compatibility
- One 120V outlet (100W) located on the bottom rear of the center console
- Ambient interior lighting
- Faux wood door trim and ornamental dash trim
- Front doorsill metal scuff plate

Safety Features

- Toyota Safety SenseTM 2.0 (TSS 2.0)⁴⁰
- Safety Connect^{®25}
- Eight airbags⁴⁸

Options

- 12.3-in. touch-screen, Bird's Eye View Camera¹⁵ with Perimeter Scan, Curb View
- Seating for eight; second-row bench seat with 60/40 split fold seats



Platinum

Adds to or replaces features offered on Limited

Exterior Features

- LED projector headlights with Adaptive Front-Lighting System (AFS)⁴, auto leveling and LED-strip Daytime Running Lights (DRL)
- Rain-sensing washer-linked variable intermittent windshield wipers
- 20-in. alloy wheels with temporary spare
- Rear lower bumper accent
- Power panoramic view moonroof with sunshade and one-touch open/close with jam protection
- Rear bumper scuff plate

Interior Features

- Digital rearview mirror with HomeLink^{®8} universal transceiver
- 7-passenger seating with heated second-row captain's chairs
- 10-in. color Head-Up Display (HUD)
- Bird's Eye View Camera¹⁵ with dynamic gridlines
- Premium Audio with Dynamic Navigation,³⁴ JBL[®] w/Clari-Fi^{®39}, 12.3-in. touch-screen display, and Android Auto^{TM18} & Apple CarPlay^{®19} & Amazon Alexa²⁰ compatibility
- Illuminated front doorsill metal scuff plate

Safety Features

- Toyota Safety SenseTM 2.0 (TSS 2.0)⁴⁰
- Safety Connect^{®25}
- Eight airbags⁴⁸



Hybrid LE

Powertrain

- 2.5-Liter L4HV engine
- Electronically controlled Continuously Variable Transmission (ECVT)
- Available electronic AWD with Trail Mode

Exterior Features

- Color-keyed heated power outside mirrors with turn signal and blind spot warning indicators³ and manual folding feature
- LED fog lights
- 18-in. alloy wheels with temporary spare
- Height-adjustable power liftgate with jam protection
- Grille shutters

Interior Features

- Leather-trimmed shift knob and steering wheel
- Audio Plus with six speakers, 8-in. touch-screen, and Android Auto^{TM18} & Apple CarPlay^{®19} & Amazon Alexa²⁰ compatibility
- Blind Spot Monitor (BSM)³ with Rear Cross-Traffic Alert (RCTA)⁵⁶

Safety Features

- Toyota Safety SenseTM 2.0 (TSS 2.0)⁴⁰
- Safety Connect^{®25}
- Eight airbags⁴⁸
- Rear-seat reminder





Hybrid XLE

Adds to or replaces features offered on Hybrid LE

Exterior Features

- 18-in. machined-finish alloy wheels with temporary spare
- Power tilt/slide moonroof with sunshade
- Roof rails

Interior Features

- Qi-compatible wireless smartphone charging⁷
- Auto-dimming rearview mirror with HomeLink^{®8} universal transceiver
- SofTex^{®9}-trimmed front- and second-row seats with heated front seats
- 7-in. color LCD Multi-Information Display (MID)
- 10-way power-adjustable driver's seat including power lumbar support
- 4-way power-adjustable front passenger seat
- 7- or 8-passenger seating with 60/40 split, fold-flat third-row seats
- Second-row sunshades

Safety Features

- Toyota Safety Sense™ 2.0 (TSS 2.0)⁴⁰
- Safety Connect^{®25}
- Eight airbags⁴⁸

Options

- Premium Audio: 8-in. touch-screen, Dynamic Navigation³⁴ with 3-year trial,³⁵ Destination Assist³⁷ with 1-year trial³⁸
- Seating for eight; second-row bench seat with 60/40 split fold seats



Hybrid Limited

Adds to or replaces features offered on Hybrid XLE

Exterior Features

- Color-keyed heated power outside mirrors with puddle lights with integrated Highlander logo, turn signal, blind spot warning indicators³ and memory feature
- LED projector headlights with LED-strip Daytime Running Lights (DRL) and Automatic High Beams (AHB)⁴³
- High-output LED fog lights
- 20-in. chrome wheels with temporary spare
- Height-adjustable hands-free power liftgate with jam protection⁶

Interior Features

- Leather-trimmed front- and second-row seats with heated and ventilated front seats
- Seat memory function
- Heated steering wheel
- Integrated backup camera⁵ with dynamic gridlines
- Premium Audio with Dynamic Navigation,³⁴ JBL[®] w/Clari-Fi,³⁹ and Android Auto^{™18} & Apple CarPlay^{®19} & Amazon Alexa²⁰ compatibility
- Two 120V outlets (1500W shared) located on the bottom rear of center console and in the luggage area
- Ambient interior lighting
- Faux wood door trim and ornamental dash trim
- Front doorsill metal scuff plate

Safety Features

- Toyota Safety Sense™ 2.0 (TSS 2.0)⁴⁰
- Safety Connect^{®25}
- Eight airbags⁴⁸

Options

- 12.3-in. touch-screen, Bird's Eye View Camera¹⁵ with Perimeter Scan, Curb View
- Seating for eight; second-row bench seat with 60/40 split fold seats



Hybrid Platinum

Adds to or replaces features offered on Hybrid Limited

Exterior Features

- LED projector headlights with Adaptive Front-Lighting System (AFS),⁴ auto leveling and LED-strip Daytime Running Lights (DRL)
- Rain-sensing washer-linked variable intermittent windshield wipers
- 20-in. alloy wheels with temporary spare
- Rear lower bumper accent
- Power panoramic view moonroof with sunshade and one-touch open/close with jam protection
- Rear bumper scuff plate

Interior Features

- Digital rearview mirror with HomeLink^{®8} universal transceiver
- 7-passenger seating with heated second-row captain's chairs
- 60/40 split, fold-flat third-row seats with sliding headrests and recline function
- 10-in. color Head-Up Display (HUD)
- Bird's Eye View Camera¹⁵ with dynamic gridlines
- Premium Audio with Dynamic Navigation,³⁴ JBL[®] w/Clari-Fi,³⁹ 12.3-in. touch-screen display, and Android Auto^{™18} & Apple CarPlay^{®19} & Amazon Alexa²⁰ compatibility
- Illuminated front doorsill metal scuff plate

Safety Features

- Toyota Safety Sense™ 2.0 (TSS 2.0)⁴⁰
- Safety Connect^{®25}
- Eight airbags⁴⁸

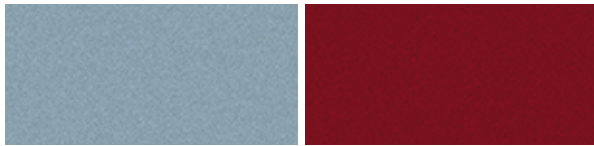


Color



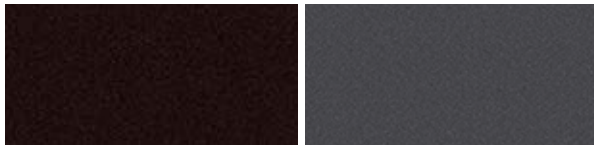
Midnight Black Metallic

Blueprint



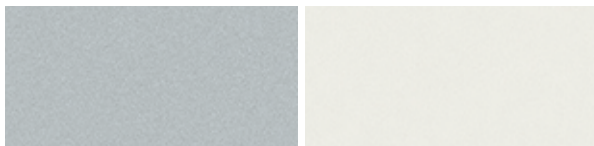
Moon Dust⁶⁸

Ruby Flare Pearl⁶⁸



Opulent Amber

Magnetic Gray Metallic

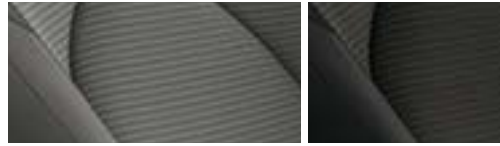


Celestial Silver Metallic

Blizzard Pearl⁶⁸

Trim

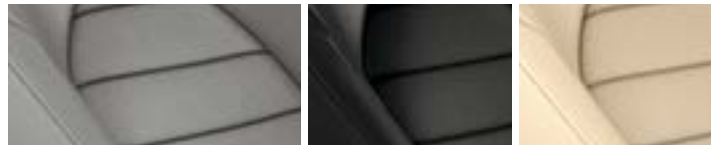
Also available in



L/LE fabric shown in Graphite

Black fabric

Also available in

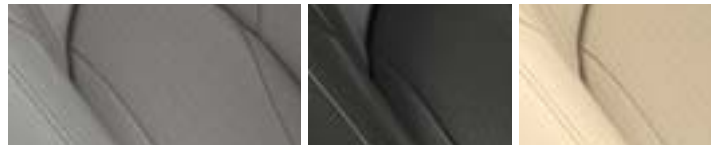


XLE SofTex^{®9} trim shown in Graphite

Black SofTex^{®9} trim

Harvest Beige SofTex^{®9} trim

Also available in



Limited leather trim shown in Graphite

Black leather trim

Harvest Beige leather trim

Also available in



Platinum leather trim shown in Graphite

Black leather trim

Harvest Beige leather trim

Glazed Caramel leather trim

Wheels



18-in. alloy wheel



18-in. machined-finish alloy wheel



20-in. chrome wheel



20-in. alloy wheel

*Not all colors and trims available on all model grades. See dealer for details. See numbered footnotes in Disclosures section.



ACCESSORIES

A wide range of Genuine Toyota Accessories is available to help make driving your Highlander even more fun. Now your Highlander can reflect your personal style. There's something for everyone. Some accessories may not be available in all regions of the country. For a complete list of accessories, go to toyota.com/highlander.

Alloy wheel locks
All-weather floor liners⁷⁵
All-Weather Floor Liners Package — includes all-weather floor liners⁷⁵ and cargo liner
Blackout emblem overlays
Body side moldings
Cargo cover⁶³
Cargo liner
Cargo net — envelope⁶³
Cargo tote⁶³
Cargo tray

Carpet cargo mat
Carpet floor mats⁷⁵
Carpet Mat & Cargo Tray Package — includes cargo liner and carpet floor mats⁷⁵
Carpet Mat Package — includes carpet cargo mat and carpet floor mats⁷⁵
Door edge guards
Emergency assistance kit
First aid kit
Four-Season Floor Mat Package — includes all-weather floor liners⁷⁵, carpet cargo mat and carpet floor mats⁷⁵

Frameless HomeLink^{®8} mirror
High-performance LED fog lights
Illuminated doorsills
Mudguards
Paint protection film for hood, fenders, mirror backs and door cups⁷⁶
Preferred Accessory Package — includes cargo net (envelope), cargo liner, carpet floor mats⁷⁵ and first aid kit
Protection Package — includes alloy wheel locks, body side moldings, door edge guards and rear bumper protector

Rear bumper appliqué
Rear bumper protector
Roof rack cross bars (XLE/Limited)
Roof rail cross bars (L/LE)
Running boards
Tow hitch receiver^{*.64}
Tow hitch receiver with wiring harness^{*.64}
Trailer ball and ball mount⁶⁴
Universal tablet holder⁴⁷

*Not available on Limited and Platinum models.



Roof rack cross bars



Running boards



Cargo net — envelope⁶³



Trailer ball and ball mount⁶⁴



Carpet floor mats⁷⁵



Rear bumper protector



Cargo tray



All-weather floor liner⁷⁵



FEATURES¹

EXTERIOR	L	LE	XLE	LIMITED	PLATINUM	HYBRID LE	HYBRID XLE	HYBRID LIMITED	HYBRID PLATINUM
Smart Key System ² on front doors and liftgate with Push Button Start, remote keyless entry system with lock, unlock and panic functions; remote illuminated entry	S	—	—	—	—	—	—	—	—
Smart Key System ² on front doors and liftgate with Push Button Start, remote keyless entry system with lock, unlock, panic and liftgate functions; remote illuminated entry	—	S	S	S	S	S	S	S	S
Color-keyed heated power outside mirrors with turn signal and manual folding feature	S	—	—	—	—	—	—	—	—
Color-keyed heated power outside mirrors with turn signal, blind spot warning indicators ³ and manual folding feature	—	S	S	—	—	S	S	—	—
Color-keyed heated power outside mirrors with puddle lights with integrated Highlander logo, turn signal, blind spot warning indicators ³ , manual folding and reverse tilt-down memory feature	—	—	—	S	S	—	—	S	S
LED reflector headlights	S	S	S	—	—	S	S	—	—
LED projector headlights with LED-strip Daytime Running Lights (DRL)	—	—	—	S	—	—	—	S	—
LED projector headlights with Adaptive Front-lighting System (AFS) ⁴ and auto leveling with LED-strip Daytime Running Lights (DRL)	—	—	—	—	S	—	—	—	S
LED fog lights	—	S	S	—	—	S	S	—	—
High-output LED fog lights	—	—	—	S	S	—	—	S	S
LED taillights and stop lights	S	S	S	S	S	S	S	S	S
Washer-linked variable intermittent windshield wipers and intermittent rear wiper	S	S	S	S	—	S	S	S	—
Rain-sensing washer-linked variable intermittent windshield wipers and intermittent rear wiper	—	—	—	—	S	—	—	—	S
Windshield wiper de-icer	S	S	S	S	S	S	S	S	S
Rear liftgate windshield defogger	S	S	S	S	S	S	S	S	S
Rear liftgate windshield washer and backup camera ⁵ washer	S	S	S	S	S	S	S	S	S
UV reduction glass on all windows	S	S	S	S	S	S	S	S	S
High solar energy-absorbing (HSEA) glass on front and rear side windows	S	S	S	S	S	S	S	S	S
Privacy glass on rear side, quarter and liftgate windows	S	S	S	S	S	S	S	S	S
18-in. alloy wheels and P235/65R18M tires	S	S	—	—	—	S	—	—	—
18-in. machined-finish alloy wheels and P235/65R18M tires	—	—	S	—	—	—	S	—	—
20-in. chrome wheels and P235/55R20M tires	—	—	—	S	—	—	—	S	—
20-in. alloy wheels and P235/55R20M tires	—	—	—	—	S	—	—	—	S
Front grille in Material Black with silver paint surround	S	S	S	—	—	S	S	—	—
Front grille in black paint with chrome-plated surround	—	—	—	S	—	—	—	S	—
Front grille in black paint and chrome-plated surround with front lower bumper in silver finish	—	—	—	—	S	—	—	—	S
Grille shutters	—	—	—	—	—	S	S	S	S
Rear lower bumper in black finish	S	S	S	—	—	S	S	—	—
Rear lower bumper in dark gray metallic finish	—	—	—	S	—	—	—	S	—
Rear lower bumper in gray metallic finish	—	—	—	—	S	—	—	—	S
Color-keyed side rocker panels and lower molding	S	S	S	S	S	S	S	S	S
Color-keyed outside door handles	S	S	S	S	S	S	S	S	S
Rear spoiler with LED center high-mount stop light	S	S	S	S	S	S	S	S	S
A-pillar in black low-gloss film	S	S	S	—	—	S	S	—	—
A-pillar in black high-gloss film	—	—	—	S	S	—	—	S	S
Chrome grade-specific badge	—	S	S	S	S	S	S	S	S
Chrome All-Wheel Drive (AWD) badging (AWD models only)	S	S	S	S	S	S	S	S	S
Chrome Hybrid badge on side and rear	—	—	—	—	—	S	S	S	S
Power tilt/slide moonroof with sunshade and one-touch open/close with jam protection	—	—	S	S	—	—	S	S	—
Power panoramic view moonroof with sunshade and one-touch open/close with jam protection	—	—	—	—	S	—	—	—	S
Height-adjustable power liftgate with jam protection	—	S	S	—	—	—	S	—	—
Height-adjustable hands-free power liftgate ⁶ with jam protection	—	—	—	S	S	—	—	S	S
Roof rails	—	—	S	S	S	—	S	S	S
Front and rear mudguards (AWD models only)	S	S	S	S	S	S	S	S	S
Rear bumper scuff plate	—	—	—	—	S	—	—	—	S



See numbered footnotes in Disclosures section.

S = Standard O = Optional — = Not available P = Feature is available as part of an option package.

FEATURES¹ (continued)

INTERIOR	L	LE	XLE	LIMITED	PLATINUM	HYBRID LE	HYBRID XLE	HYBRID LIMITED	HYBRID PLATINUM
Power windows with auto up/down in all positions and jam protection	S	S	S	S	S	S	S	S	S
Three-zone automatic climate control with air filter, separate second-row control panel, individual temperature settings for driver, front passenger and rear-seat passengers, and second- and third-row vents	S	S	S	S	S	S	S	S	S
Black interior door handles	S	S	—	—	—	S	—	—	—
Chrome interior door handles	—	—	S	S	S	—	S	S	S
Power door locks with shift-linked automatic lock/unlock feature	S	S	S	S	S	S	S	S	S
Soft-touch roll-top center console with removable utility tray	S	S	S	S	S	S	S	S	S
Qi-compatible wireless smartphone charging ⁷ with charge indicator light	—	—	S	S	S	—	S	S	S
Soft-touch in-dash split-level shelf	S	S	S	S	S	S	S	S	S
Eight cup holders and four bottle holders	S	S	S	S	S	S	S	S	S
Dual sun visors with sliding function and illuminated vanity mirrors	S	S	S	S	S	S	S	S	S
Overhead console with conversation mirror, sunglasses storage and maplights	S	S	S	S	S	S	S	S	S
Day/night rearview mirror	S	S	—	—	—	S	—	—	—
Auto-dimming rearview mirror with HomeLink ^{®8} universal transceiver	—	—	S	S	—	—	S	S	—
Digital rearview mirror with HomeLink ^{®8} universal transceiver	—	—	—	—	S	—	—	—	S
Fabric-trimmed front- and second-row seats; 8-way power-adjustable driver's seat; 4-way manual-adjustable front passenger seat	S	S	—	—	—	S	—	—	—
SoftTex ^{®9} -trimmed front- and second-row seats; heated front seats; 10-way power-adjustable driver's seat including power lumbar support; 4-way power-adjustable front passenger seat	—	—	S	—	—	—	S	—	—
Leather-trimmed front- and second-row seats; heated and ventilated front seats; 10-way power-adjustable driver's seat including power lumbar support; 4-way power-adjustable front passenger seat; seat memory function	—	—	—	S	S	—	—	S	S
8-passenger seating with 60/40 split, sliding and reclining fold-flat second-row bench seats; 60/40 split, fold-flat third-row seats with sliding headrests and recline function	S	S	O	O	—	S	O	O	—
7-passenger seating with second-row fold-down captain's chairs with fold-down inboard armrests, adjustable headrests, two cup holders mounted on the floor, and 60/40 split, fold-flat third-row seats with sliding headrests and recline function	—	—	S	S	S	—	S	S	S
Heated second row	—	—	—	—	S	—	—	—	S
Second-row sunshades	—	—	S	S	S	—	S	S	S
Tilt/telescopic steering wheel with audio, Multi-Information Display (MID), Bluetooth ^{®10} hands-free phone, voice command, Dynamic Radar Cruise Control (DRCC), ¹¹ Lane Departure Alert with Steering Assist (LDA w/SA), ¹² and multimedia information controls	S	—	—	—	—	—	—	—	—
Leather-trimmed shift knob and tilt/telescopic leather steering wheel with audio, Multi-Information Display (MID), Bluetooth ^{®10} hands-free phone, voice command, Dynamic Radar Cruise Control (DRCC), ¹¹ Lane Departure Alert with Steering Assist (LDA w/SA), ¹² and multimedia information controls	—	S	S	S	S	S	S	S	S
Heated steering wheel	—	—	—	S	S	—	—	S	S
4.2-in. color LCD Multi-Information Display (MID) in meter cluster with odometer, current/average fuel economy, cruising range, average speed, AWD torque distribution (AWD models only), cruise control guide, audio status, hands-free incoming call notices, telephone information, ECO Driving Indicator, and Energy Monitor (hybrid models only)	S	S	—	—	—	S	—	—	—
7-in. color LCD Multi-Information Display (MID) in meter cluster with odometer, current/average fuel economy, cruising range, average speed, AWD torque distribution (AWD gas models only), cruise control guide, audio status, hands-free incoming call notices, telephone information, ECO Driving Indicator, and Energy Monitor (hybrid models only)	—	—	S	S	S	—	S	S	S
10-in. color Head-Up Display (HUD) with speedometer and Road Sign Assist (RSA), ¹³ navigation ¹⁴ and Hybrid System Indicator (hybrid models only)	—	—	—	—	S	—	—	—	S
Integrated backup camera ⁵ with projected path	S	S	S	—	—	S	S	—	—
Integrated backup camera ⁵ with dynamic gridlines	—	—	—	S	—	—	—	S	—
Bird's Eye View Camera ¹⁵ with dynamic gridlines — includes Perimeter Scan, 360-Degree Overhead View in Low-Speed Drive and Reverse, and Curb View	—	—	—	O	S	—	—	O	S
Four USB ports ¹⁶ and two 12V outlets ¹⁷	S	S	S	S	S	S	S	S	S
One 120V outlet (100W) located on the bottom rear of the center console	—	—	—	S	S	—	—	—	—
Two 120V outlets (1500W shared) located on the bottom rear of the center console and in the luggage area	—	—	—	—	—	—	—	S	S
Ambient interior lighting	—	—	—	S	S	—	—	S	S
Painted door, console and dashboard trim	S	S	S	—	—	S	S	—	—

See numbered footnotes in Disclosures section.



S = Standard O = Optional — = Not available P = Feature is available as part of an option package.

FEATURES¹ (continued)

INTERIOR (continued)

	L	LE	XLE	LIMITED	PLATINUM	HYBRID LE	HYBRID XLE	HYBRID LIMITED	HYBRID PLATINUM
Faux wood door trim and ornamental dash trim	—	—	—	S	S	—	—	S	S
Front doorsill metal scuff plate	—	—	—	S	—	—	—	S	—
Illuminated front doorsill metal scuff plate	—	—	—	—	S	—	—	—	S
Six tie-down cargo hooks	S	S	S	S	S	S	S	S	S
Cargo area tonneau cover	—	—	—	S	S	—	—	S	S
Front- and second-row-seat reading lights	S	S	S	S	S	S	S	S	S
Digital clock	S	S	S	S	S	S	S	S	S
Driver Easy Speak — utilizes microphone in overhead console to amplify the driver's voice and broadcast it through rear speakers	—	—	O	S	S	—	O	S	S

MULTIMEDIA

Audio — includes six speakers, 8-in. touch-screen, Android Auto ^{TM18} & Apple CarPlay ^{®19} & Amazon Alexa ²⁰ compatible, USB media port, ¹⁶ advanced voice recognition, ²¹ hands-free phone capability and music streaming ¹⁰ via Bluetooth ^{®10} wireless technology, SiriusXM ^{®22} with 3-month All Access trial, ²³ Connected Services ²⁴ — Safety Connect ^{®25} with 1-year trial, ²⁶ Wi-Fi Connect ²⁷ with up to 2 GB within 3-month trial. ²⁸ See toyota.com/audio-multimedia for details.	S	—	—	—	—	—	—	—	—
Audio Plus — includes six speakers, 8-in. touch-screen, HD Radio, ^{TM29} USB media port, ¹⁶ advanced voice recognition, ²¹ hands-free phone capability and music streaming ¹⁰ via Bluetooth ^{®10} wireless technology, Android Auto ^{TM18} & Apple CarPlay ^{®19} & Amazon Alexa ²⁰ compatible, SiriusXM ^{®22} with 3-month All Access trial, ²³ Connected Services ²⁴ — Safety Connect ^{®25} with 1-year trial, ²⁶ Service Connect ³⁰ with 10-year trial, ³¹ Remote Connect ³² with 1-year trial, ³³ Wi-Fi Connect ²⁷ with up to 2 GB within 3-month trial. ²⁸ See toyota.com/audio-multimedia for details.	—	S	S	—	—	S	S	—	—
Premium Audio, Dynamic Navigation ³⁴ — includes six speakers, 8-in. touch-screen, HD Radio, ^{TM29} USB media port, ¹⁶ Dynamic Navigation ³⁴ with up to 3-year trial, ³⁵ Dynamic POI Search, Dynamic Voice Recognition, ³⁶ hands-free phone capability and music streaming ¹⁰ via Bluetooth ^{®10} wireless technology, Android Auto ^{TM18} & Apple CarPlay ^{®19} & Amazon Alexa ²⁰ compatible, SiriusXM ^{®22} with 3-month All Access trial, ²³ Connected Services ²⁴ — Safety Connect ^{®25} with 1-year trial, ²⁶ Service Connect ³⁰ with 10-year trial, ³¹ Remote Connect ³² with 1-year trial, ³³ Wi-Fi Connect ²⁷ with up to 2 GB within 3-month trial. ²⁸ Destination Assist ³⁷ with 1-year trial. ³⁸ See toyota.com/audio-multimedia for details.	—	—	O	—	—	—	O	—	—
Premium Audio, Dynamic Navigation ³⁴ and JBL [®] w/Clari-Fi ^{®39} — includes 11 speakers including subwoofer and amplifier, 8-in. touch-screen, HD Radio, ^{TM29} USB media port, ¹⁶ Dynamic Navigation ³⁴ with up to 3-year trial, ³⁵ Dynamic POI Search, Dynamic Voice Recognition, ³⁶ hands-free phone capability and music streaming ¹⁰ via Bluetooth ^{®10} wireless technology, Android Auto ^{TM18} & Apple CarPlay ^{®19} & Amazon Alexa ²⁰ compatible, SiriusXM ^{®22} with 3-month All Access trial, ²³ Connected Services ²⁴ — Safety Connect ^{®25} with 1-year trial, ²⁶ Service Connect ³⁰ with 10-year trial, ³¹ Remote Connect ³² with 1-year trial, ³³ Wi-Fi Connect ²⁷ with up to 2 GB within 3-month trial, ²⁸ Destination Assist ³⁷ with 1-year trial. ³⁸ See toyota.com/audio-multimedia for details.	—	—	—	S	—	—	—	S	—
Premium Audio, Dynamic Navigation ³⁴ and JBL [®] w/Clari-Fi ^{®39} — includes 11 speakers including subwoofer and amplifier, 12.3-in. touch-screen, HD Radio, ^{TM29} USB media port, ¹⁶ Dynamic Navigation ³⁴ with up to 3-year trial, ³⁵ Dynamic POI Search, Dynamic Voice Recognition, ³⁶ hands-free phone capability and music streaming ¹⁰ via Bluetooth ^{®10} wireless technology, Android Auto ^{TM18} & Apple CarPlay ^{®19} & Amazon Alexa ²⁰ compatible, SiriusXM ^{®22} with 3-month All Access trial, ²³ Connected Services ²⁴ — Safety Connect ^{®25} with 1-year trial, ²⁶ Service Connect ³⁰ with 10-year trial, ³¹ Remote Connect ³² with 1-year trial, ³³ Wi-Fi Connect ²⁷ with up to 2 GB within 3-month trial, ²⁸ Destination Assist ³⁷ with 1-year trial. ³⁸ See toyota.com/audio-multimedia for details.	—	—	—	O	S	—	—	O	S

See numbered footnotes in Disclosures section.



S = Standard O = Optional — = Not available P = Feature is available as part of an option package.

FEATURES¹ (continued)

SAFETY/CONVENIENCE

	L	LE	XLE	LIMITED	PLATINUM	HYBRID LE	HYBRID XLE	HYBRID LIMITED	HYBRID PLATINUM
Toyota Safety Sense™ 2.0 (TSS 2.0) ⁴⁰ — Pre-Collision System with Pedestrian Detection (PCS w/PD) ⁴¹ Lane Departure Alert with Steering Assist (LDA w/SA) ⁴² Lane Tracing Assist (LTA) ⁴² Automatic High Beams (AHB) ⁴³ Full-Speed Range Dynamic Radar Cruise Control (DRCC) ⁴¹ Road Sign Assist (RSA) ⁴³ and Cyclist Detection (CD)	S	S	S	S	S	S	S	S	S
STAR ™ SAFETY SYSTEM Star Safety System™ — includes Enhanced Vehicle Stability Control (Enhanced VSC) ⁴⁴ Traction Control (TRAC), Anti-lock Brake System (ABS), Electronic Brake-force Distribution (EBD), Brake Assist (BA) ⁴⁵ and Smart Stop Technology® (SST) ⁴⁶	S	S	S	S	S	—	—	—	—
Star Safety System™ — includes Electronically Controlled Braking (ECB), Enhanced Vehicle Stability Control (Enhanced VSC) ⁴⁴ Traction Control (TRAC), Anti-lock Brake System (ABS), Electronic Brake-force Distribution (EBD), Brake Assist (BA) ⁴⁵ and Smart Stop Technology® (SST) ⁴⁶	—	—	—	—	—	S	S	S	S
Eight airbags ⁴⁸ (driver airbag, front passenger airbag, knee airbag (driver), seat cushion airbag (passenger), front side airbags, curtain shield airbags)	S	S	S	S	S	S	S	S	S
Safety Connect® ²⁵ — includes Emergency Assistance, Stolen Vehicle Locator, ⁴⁹ Roadside Assistance ⁵⁰ and Automatic Collision Notification. Available by subscription. Complimentary three-year trial subscription ²⁶	S	S	S	S	S	S	S	S	S
LATCH (Lower Anchors and Tethers for CHildren) includes lower anchors and tethers on outboard second-row seats and tether anchor on middle of second- and third-row seats	S	S	S	S	S	S	S	S	S
Child-protector rear door locks	S	S	S	S	S	S	S	S	S
Driver and front passenger Whiplash-Injury-Lessening (WIL) ⁵¹ seats	S	S	S	S	S	S	S	S	S
Driver and front passenger seatbelt warning	S	S	S	S	S	S	S	S	S
Rear passenger seatbelt reminder	S	S	S	S	S	S	S	S	S
Rear-seat reminder	S	S	S	S	S	S	S	S	S
Three-point seatbelts for all seating positions; driver's-side Emergency Locking Retractor (ELR) and Automatic/Emergency Locking Retractor (ALR/ELR) on all passenger seatbelts	S	S	S	S	S	S	S	S	S
Adjustable front seatbelt shoulder anchors and driver and front passenger seatbelt pretensioners with force limiters	S	S	S	S	S	S	S	S	S
Collapsible steering column	S	S	S	S	S	S	S	S	S
Front and rear energy-absorbing crumple zones and side-impact door beams	S	S	S	S	S	S	S	S	S
Energy-dissipating interior trim	S	S	S	S	S	S	S	S	S
Tire Pressure Monitor System (TPMS) ⁵²	S	S	S	S	S	S	S	S	S
Hill Start Assist Control (HAC) ⁵³	S	S	S	S	S	S	S	S	S
Downhill Assist Control (DAC) ⁵⁴	S	S	S	S	S	—	—	—	—
Engine immobilizer ⁵⁵	S	S	S	S	S	S	S	S	S
Engine immobilizer ⁵⁵ alarm	—	S	S	S	S	S	S	S	S
Blind Spot Monitor (BSM) ³ with Rear Cross-Traffic Alert (RCTA) ⁵⁶	—	S	S	S	S	S	S	S	S
Electronic Parking Brake (EPB) ⁵⁷	S	S	S	S	S	S	S	S	S
Stop and Start Engine System (S&S) ⁵⁸	S	S	S	S	S	—	—	—	—
Front and Rear Parking Assist with Automated Braking (PA w/AB) ⁵⁹	—	—	—	S	S	—	—	S	S
Snow Mode + Drive Mode Select (ECO, Normal, Sport); FWD only	S	S	S	S	S	—	—	—	—
Snow Mode + Drive Mode Select (ECO, Normal, Sport) + Multi-Terrain Select (Mud/Sand, Rock/Dirt, Normal); AWD only	S	S	S	S	S	—	—	—	—
Trail Mode; AWD only	—	—	—	—	—	S	S	S	S
Single-disconnect AWD; Multi-Terrain Select with switches	A	A	A	—	—	—	—	—	—
Dynamic Torque Vectoring AWD with Driveline Disconnect; Multi-Terrain Select with dial	—	—	—	A	A	—	—	—	—
Predictive Fuel-Efficient Drive ⁶⁰	—	—	—	—	—	—	O	S	S



See numbered footnotes in Disclosures section.

S = Standard A = Available O = Optional — = Not available P = Feature is available as part of an option package.

SPECIFICATIONS

MECHANICAL/PERFORMANCE	L	LE	XLE	LIMITED	PLATINUM	HYBRID LE	HYBRID XLE	HYBRID LIMITED	HYBRID PLATINUM
ENGINE									
Gasoline engine — 3.5-Liter V6 Dual Overhead Cam (DOHC) 24-Valve D-4S Injection Atkinson Cycle-capable Engine with Dual Variable Valve Timing with Intelligence (VVT-i) and Stop and Start Engine System (S&S); ⁵⁸ 295 hp @ 6600 rpm, 263 lb.-ft. @ 4700 rpm	Standard	Standard	Standard	Standard	Standard	N/A	N/A	N/A	N/A
Hybrid powertrain — 2.5-Liter L4HV Double Overhead Cam (DOHC) 24-Valve D-4S Injection Atkinson Cycle Engine with Dual Variable Valve Timing with intelligence (VVT-i); intake controlled by electric motor; combined 243 net hp, includes combustion engine with 186 hp @ 6000 rpm; 175 lb.-ft. @ 4400 rpm	N/A	N/A	N/A	N/A	N/A	Standard	Standard	Standard	Standard
EMISSION RATING									
Ultra Low Emission Vehicle III (ULEV-III)	Standard	Standard	Standard	Standard	Standard	N/A	N/A	N/A	N/A
Super Ultra Low Emission Vehicle (SULEV) ⁶¹	N/A	N/A	N/A	N/A	N/A	Standard	Standard	Standard	Standard
ELECTRIC MOTORS (TWO, FRONT AND REAR)									
Permanent magnet synchronous motors (two front; FWD)	N/A	N/A	N/A	N/A	N/A	Standard	Standard	Standard	Standard
Permanent magnet synchronous motors (two front, one rear; AWD)	N/A	N/A	N/A	N/A	N/A	Available	Available	Available	Available
TRACTION BATTERY									
Battery type: Sealed Nickel Metal Hydride (Ni-MH) ⁶²	N/A	N/A	N/A	N/A	N/A	Standard	Standard	Standard	Standard
TRANSMISSION									
Direct Shift-8AT 8-speed electronically controlled automatic transmission	Standard	Standard	Standard	Standard	Standard	N/A	N/A	N/A	N/A
Electronically controlled Continuously Variable Transmission (ECVT) with sequential shift mode	N/A	N/A	N/A	N/A	N/A	Standard	Standard	Standard	Standard
DRIVETRAIN									
Front-Wheel Drive (FWD)	Standard	Standard	Standard	Standard	Standard	Standard	Standard	Standard	Standard
All-Wheel Drive (AWD)	Available	Available	Available	N/A	N/A	N/A	N/A	N/A	N/A
Dynamic Torque Vectoring AWD	N/A	N/A	N/A	Available	Available	N/A	N/A	N/A	N/A
Electronic On-Demand AWD system	N/A	N/A	N/A	N/A	N/A	Available	Available	Available	Available
BODY CONSTRUCTION									
Reinforced unibody	Standard	Standard	Standard	Standard	Standard	Standard	Standard	Standard	Standard
SUSPENSION									
Independent MacPherson strut front suspension with stabilizer bar; trailing-wishbone suspension	Standard	Standard	Standard	Standard	Standard	Standard	Standard	Standard	Standard
Multi-link rear suspension with stabilizer bar	Standard	Standard	Standard	Standard	Standard	Standard	Standard	Standard	Standard
STEERING									
Electric Power Steering (EPS); power-assisted rack-and-pinion	Standard	Standard	Standard	Standard	Standard	Standard	Standard	Standard	Standard
Turning radius (ft.)	18.7	18.7	18.7	18.7	18.7	18.7	18.7	18.7	18.7
Turning diameter (ft.)	37.4	37.4	37.4	37.4	37.4	37.4	37.4	37.4	37.4
BRAKES									
Power-assisted ventilated 13.3-in. front disc brakes; solid 13.3-in. rear disc brakes and Star Safety System™	Standard	Standard	Standard	Standard	Standard	N/A	N/A	N/A	N/A
Power-assisted ventilated 13.3-in. front disc brakes; solid 13.3-in. rear disc brakes with Electronically Controlled Braking (ECB) system, integrated regenerative braking and Star Safety System™	N/A	N/A	N/A	N/A	N/A	Standard	Standard	Standard	Standard



See numbered footnotes in Disclosures section.

S = Standard O = Optional — = Not available P = Feature is available as part of an option package.

SPECIFICATIONS (continued)

DIMENSIONS	L	LE	XLE	LIMITED	PLATINUM	HYBRID LE	HYBRID XLE	HYBRID LIMITED	HYBRID PLATINUM
EXTERIOR (in.)									
Overall length/width	194.9/76.0	194.9/76.0	194.9/76.0	194.9/76.0	194.9/76.0	194.9/76.0	194.9/76.0	194.9/76.0	194.9/76.0
Unloaded height (no antenna)	68.1	68.1	68.1	68.1	68.1	68.1	68.1	68.1	68.1
Wheelbase	112.2	112.2	112.2	112.2	112.2	112.2	112.2	112.2	112.2
Track (front/rear)	65.3/65.4	65.3/65.4	65.3/65.4	65.3/65.4	65.3/65.4	65.3/65.4	65.3/65.4	65.3/65.4	65.3/65.4
INTERIOR front/second-row/third-row seats (in.)									
Head room	41.2/39.4/36.1	41.2/39.4/36.1	39.6/39.4/36.1	39.6/39.4/36.1	38.4/37.1/36.1	41.2/39.4/36.1	39.6/39.4/36.1	39.6/39.4/36.1	38.4/37.1/36.1
Shoulder room (w/o shade)	59.0/58.7/55.0	59.0/58.7/55.0	N/A	N/A	N/A	59.0/58.7/55.0	N/A	N/A	N/A
Shoulder room (with shade)	N/A	N/A	59.0/58.4/55.0	59.0/58.4/55.0	59.0/58.4/55.0	N/A	59.0/58.4/55.0	59.0/58.4/55.0	59.0/58.4/55.0
Hip room	57.2/57.0/45.6	57.2/57.0/45.6	57.2/57.0/45.6	57.2/57.0/45.6	57.2/57.0/45.6	57.2/57.0/45.6	57.2/57.0/45.6	57.2/57.0/45.6	57.2/57.0/45.6
Leg room	42.0/41.0/27.7	42.0/41.0/27.7	42.0/41.0/27.7	42.0/41.0/27.7	42.0/41.0/27.7	42.0/41.0/27.7	42.0/41.0/27.7	42.0/41.0/27.7	42.0/41.0/27.7
OFF-HIGHWAY									
Approach/departure angle (degrees)	18.1/22.9	18.1/22.9	18.1/22.9	18.1/22.9	18.1/22.9	18.1/22.9	18.1/22.9	18.1/22.9	18.1/22.9
Ramp breakover angle	16.7	16.7	16.7	16.7	16.7	16.7	16.7	16.7	16.7
Ground clearance (in.)	8	8	8	8	8	8	8	8	8
WEIGHTS/CAPACITIES									
Curb weight (lb.) (standard seating config.) (FWD/AWD)	4,145/4,330	4,145/4,330	4,195/4,370	4,260/4,450	4,260/4,450	4,330/4,465	4,365/4,515	4,430/4,595	4,430/4,595
Gross Vehicle Weight Rating (GVWR) (lb.) (standard seating config.) (FWD/AWD)	5,830/5,935	5,830/5,935	5,830/5,935	5,830/5,935	5,830/5,935	5,960/6,000	5,960/6,000	5,960/6,000	5,960/6,000
EPA passenger volume (cu. ft.) [without moonroof] front/second/third row	141.3	141.3	N/A	N/A	N/A	141.3	N/A	N/A	N/A
EPA passenger volume (cu. ft.) [with moonroof] first/second/third row	N/A	N/A	139.1	139.1	N/A	N/A	139.1	139.1	N/A
EPA passenger volume (cu. ft.) [with panoramic moonroof] first/second/third row	N/A	N/A	N/A	N/A	136.1	N/A	N/A	N/A	136.1
Cargo volume (cu. ft.) ⁶³ behind front/second-row/third-row seats	84.3/48.4/16.0	84.3/48.4/16.0	84.3/48.4/16.0	84.3/48.4/16.0	84.3/48.4/16.0	84.3/48.4/16.0	84.3/48.4/16.0	84.3/48.4/16.0	84.3/48.4/16.0
Fuel tank (gal.)	17.9	17.9	17.9	17.9	17.9	17.1	17.1	17.1	17.1
Seating capacity (standard/optional)	8	8	7/8	7/8	7	8	7/8	7 / 8	7
TOWING									
Towing capacity (lb.) ⁶⁴	5,000	5,000	5,000	5,000*	5,000*	3,500	3,500	3,500*	3,500*
Trailer Sway Control (TSC) ⁶⁵	Standard	Standard	Standard	Standard	Standard	Standard	Standard	Standard	Standard
TIRES									
TYPE									
All-Season steel-belted radials	Standard	Standard	Standard	Standard	Standard	Standard	Standard	Standard	Standard
Spare — temporary spare tire	Standard	Standard	Standard	Standard	Standard	Standard	Standard	Standard	Standard
MILEAGE ESTIMATES (mpg city/highway)									
FWD	21/29/24 ⁶⁶	21/29/24 ⁶⁶	21/29/24 ⁶⁶	21/29/24 ⁶⁶	21/29/24 ⁶⁶	36/35/36 ⁶⁷	36/35/36 ⁶⁷	36/35/36 ⁶⁷	36/35/36 ⁶⁷
AWD	20/27/23 ⁶⁶	20/27/23 ⁶⁶	20/27/23 ⁶⁶	20/27/23 ⁶⁶	20/27/23 ⁶⁶	35/35/35 ⁶⁷	35/35/35 ⁶⁷	35/34/35 ⁶⁷	35/34/35 ⁶⁷

*Installation of tow hitch receiver will disable touchless sensor of hands-free power liftgate.



See numbered footnotes in Disclosures section.

S = Standard O = Optional — = Not available P = Feature is available as part of an option package.

CARS BUILT FOR THE WAY YOU LIVE

At Toyota, we build cars for how you live. From building advanced safety features designed to help prevent crashes to driving cross-country to understand how we can make your driving experience better, our work starts with understanding your needs. Building cars for how you live also means thinking about tomorrow — from fuel efficiency and environmental innovations, to things beyond cars, like a bicycle that you can control with your mind. And because what we learn building cars can help improve lives in other places, we do things like help communities rebuild their homes quickly after a disaster and work with soup kitchens to help them serve more people faster. Toyota. Built for how you live. Together we are going places.

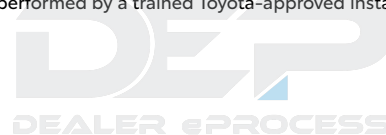
DISCLOSURES

1. Toyota strives to build vehicles to match customer interest and thus they typically are built with popular options and option packages. Not all options/packages are available separately and some may not be available in all regions of the country. See toyota.com for information about options/packages commonly available in your area. If you would prefer a vehicle without any or with different options, contact your dealer to check for current availability or the possibility of placing a special order. Color(s) depicted may vary based on multiple factors, including ambient lighting and the format in which it is being viewed (e.g., computer, mobile device or print).

2. The Smart Key System may interfere with some pacemakers or cardiac defibrillators. If you have one of these medical devices, please talk to your doctor to see if you should deactivate this system. 3. Do not rely exclusively on the Blind Spot Monitor. Always look over your shoulder and use your turn signal. There are limitations to the function, detection and range of the monitor. See *Owner's Manual* for additional limitations and details. 4. The Adaptive Front-Lighting System helps improve night vision. Situations such as a dirty windshield, rapidly changing light conditions or hilly terrain may limit effectiveness, requiring the driver to manually turn off the system. See *Owner's Manual* for additional limitations and details. 5. The backup camera does not provide a comprehensive view of the rear area of the vehicle and you should also look around the vehicle, using mirrors to confirm rearward clearance. Environmental conditions may limit effectiveness and view may become obscured. See *Owner's Manual* for additional limitations and details. 6. Installation of a tow hitch receiver will disable touchless sensor and the sensor operation setting in your vehicle should be turned off. Water, weather, dirt, and other conditions also may cause the sensor to not operate properly or to operate unintentionally. See *Owner's Manual* for limitations. 7. Qi wireless charging may not be compatible with all mobile phones, MP3/WMA players and like models. When using the wireless charging system, avoid placing metal objects between the wireless charger and the mobile device when charging is active. Doing so may cause metal objects to become hot and could cause burns. 8. HomeLink® and the HomeLink® house icon are registered trademarks of Gentex Corporation. 9. SofTex® is a registered trademark of Toyota Motor Sales, U.S.A., Inc. 10. The Bluetooth® word mark and logos are registered trademarks owned by Bluetooth SIG, Inc., and any use of such marks by Toyota is under license. A compatible Bluetooth®-enabled phone must first be paired. Phone performance depends on software, coverage and carrier. 11. Dynamic Radar Cruise Control is designed to assist the driver and is not a substitute for safe and attentive driving practices. System effectiveness is dependent on many factors including road, weather and traffic conditions. DRCC not available on manual transmissions. See *Owner's Manual* for additional limitations and details. 12. Lane Departure Alert with Steering Assist is designed to read visible lane markers under certain conditions. It provides a visual and audible alert and slight steering force when lane departure is detected. It is not a collision-avoidance system or a substitute for safe and attentive driving. Effectiveness is dependent on many factors including road, weather and vehicle conditions. See *Owner's Manual* for additional limitations and details. 13. Do not rely exclusively on Road Sign Assist (RSA). RSA is a driver support system that utilizes the vehicle's forward-facing camera and navigation system (when data is available) to recognize certain road signs and provide information to the driver via the multi-information display and/or Head-Up Display. Effectiveness is dependent on road, weather, vehicle and sign conditions. Use common sense when using RSA and do not drive distracted. See *Owner's Manual* for additional limitations and details. 14. Be sure to obey traffic regulations and maintain awareness of road and traffic conditions at all times. Functionality, availability and accuracy of information provided by the system depends on many factors and service may not be available in every location. Use common sense when relying on information provided. Apps/services vary by phone/carrier. Select apps use large amounts of data; you are responsible for charges. Apps and services subject to change at any time without notice. See toyota.com/connected-services for details. Services and programming subject to change. Updates may be available from your dealer at an additional cost. See *Owner's Manual* for additional limitations and details. 15. The Bird's Eye View Camera does not provide a comprehensive view of the area surrounding the vehicle and you should also look around the vehicle, using mirrors to confirm surrounding clearance. Environmental conditions may limit effectiveness and view may become obscured. See *Owner's Manual* for additional limitations and details. 16. May not be compatible with all mobile phones, MP3/WMA players and like models. 17. Rated for 12 volts. See *Owner's Manual* for additional limitations and details. 18. Vehicle user interface is a product of Google and its terms and privacy statement apply. Requires compatible smartphone connected with an approved data cable into the USB media port, and data plan rates apply. Android, Android Auto and Waze are trademarks of Google. 19. Always drive safely and obey traffic laws. Apps and services are subject to change at any time without notice. Data charges may apply. Apple CarPlay® functionality requires a compatible iPhone® connected with an approved data cable into the USB media port. Apple CarPlay® is a registered trademark of Apple Inc. 20. Amazon, Alexa and all related logos are trademarks of Amazon.com, Inc. or its affiliates. Certain functions require adequate signal strength and smartphone technology/connectivity. Not all Amazon Alexa functionality is available for in-vehicle use. See applicable app for details. Download of the Toyota+Alexa app is required to begin in-vehicle use of Alexa. Data charges may apply for certain functions. Apps, prices and services subject to change at any time without notice. To learn more, go to <https://www.toyota.com/audio-multimedia>. To learn more about Toyota's data collection, use, sharing and retention practices, please visit <https://www.toyota.com/privacyvts/>. 21. Advanced voice recognition capabilities vary by head unit. 22. SiriusXM® audio services require a subscription sold separately by Sirius XM Radio Inc. If you decide to continue service after your trial, the subscription plan you choose will automatically renew thereafter and you will be charged according to your chosen payment method at then-current rates. Fees and taxes apply. To cancel, you must call SiriusXM at 1-866-635-2349. See SiriusXM Customer Agreement for complete terms at www.siriusxm.com. All fees and programming subject to change. Not all vehicles or devices are capable of receiving all services offered by SiriusXM. Current information and features may not be available in all locations, or on all receivers. ©2020 Sirius XM Radio Inc. SiriusXM and all related marks and logos are trademarks of Sirius XM Radio Inc. 23. SiriusXM All Access trial length and service availability may vary by model, model year or trim. 24. Connected Services depends on an operative telematics device, a cellular connection, navigation map data, GPS signal strength and other factors outside of Toyota's control, all of which can limit system functionality or availability, including access to response center and emergency support. Service may vary by vehicle and region. Terms of Use apply. Data charges may apply. Apps and services subject to change at any time without notice. See toyota.com/connected-services for details. To learn about Toyota's data collection, use, sharing and retention practices, please visit <https://www.toyota.com/privacyvts/>. Stolen vehicle police report required to use Stolen Vehicle Locator. 25. Toyota Safety Connect® depends on an operative telematics device, a cellular connection, navigation map data and GPS signal strength and other factors outside of Toyota's control, all of which can limit system functionality or availability, including access to response center and emergency support. Stolen vehicle police report required to use Stolen Vehicle Locator. Registration required. Service subject to change at any time without notice. Terms of Use apply. Service may vary by vehicle and region. See usage precautions and service limitations in *Owner's Manual* and at toyota.com/connected-services/ for additional details. To learn about Toyota's data collection, use, sharing and retention practices, please visit <https://www.toyota.com/privacyvts/>. 26. The Safety Connect® trial period is at no extra cost and begins on the original date of purchase or lease of a new vehicle. After the trial period expires, enrollment in paid subscription is required to access the service. 27. Eligible vehicle and wireless service required. Coverage and service not available everywhere. Valid in the contiguous U.S. and Alaska. Do not drive distracted. Go to att.com/toyota for terms and conditions. Data usage and charges apply. Up to 5 devices can be supported using in-vehicle connectivity. Apps and services subject to change at any time without notice. 28. The Wi-Fi Connect trial begins at the time of activation and expires when 2GB of data is used or when the 3-month period ends. After the trial period expires, enrollment in a paid subscription is required to access the service. Terms and conditions apply. 29. HD Radio™ Technology manufactured under license from iBiquity Digital Corporation U.S. and Foreign Patents. HD Radio™ and the HD, HD Radio, and "Arc" logos are proprietary trademarks of iBiquity Digital Corp. 30. Information provided is based on the last time data was collected from the vehicle and may not be up to date. Service Connect depends on an operative telematics device, a cellular connection, navigation map data, GPS signal strength and other factors outside of Toyota's control, which can limit functionality or availability. Service may vary by vehicle and region. Registration required. Service subject to change at any time without notice. Terms and conditions of subscription service agreement apply. See usage precautions and service limitations in *Owner's Manual* and at toyota.com/connected-services for additional details. To learn about Toyota's data collection, use, sharing and retention, please visit <https://www.toyota.com/privacyvts/>. 31. The Service Connect trial period is at no extra cost and begins on the original date of purchase or lease of a new vehicle. After the respective trial period expires, enrollment in paid subscription is required to access the service. 32. Use only if aware of circumstances surrounding vehicle and it is legal and safe to do so (e.g., do not remotely start engine if vehicle is in an enclosed space or vehicle is occupied by a child). Remote Connect depends on an operative telematics device, a cellular connection, GPS signal strength and other factors outside of Toyota's control, which can limit system functionality and availability. Service may vary by vehicle and region. Registration and app download required. Terms of Use apply. Data charges may apply. Remote start/stop not available on manual-transmission-equipped vehicles. Services subject to change at any time without notice. See usage precautions and service limitations in *Owner's Manual* and at <https://www.toyota.com/connected-services/> for additional details. To learn about Toyota's data collection, use, sharing and retention

DISCLOSURES (continued)

practices, please visit <https://www.toyota.com/privacypvts/>. **33.** The Remote Connect trial period is at no extra cost and begins on the original date of purchase or lease of a new vehicle. After the trial period expires, enrollment in a paid subscription is required to access the service. Terms and conditions apply. **34.** Dynamic Navigation depends on an operative telematics device, a cellular connection, navigation map data and GPS signal strength, and other factors outside of Toyota's control, which can limit system functionality or availability. Services not available in every city or roadway. Use common sense when relying on information provided. Service may vary by vehicle and region. Registration is required. Terms of Use apply. See *Owner's Manual* and <https://toyota.com/connected-services/> for additional limitations and details. To learn about Toyota's data collection, use, sharing and retention practices, please visit <https://www.toyota.com/privacypvts/>. **35.** The Dynamic Navigation three year trial period begins on the original date of purchase or lease of a new vehicle. After the trial period expires, enrollment in paid subscription is required to access the service. **36.** Dynamic voice recognition capabilities vary by head unit. **37.** Destination Assist depends on an operative telematics device, a cellular connection, navigation map data and GPS signal strength and other factors outside of Toyota's control, which can limit system ability functionality or availability. Use common sense when relying on this information. Service may vary by vehicle and region. Registration required. Services subject to change at any time without notice. Terms of Use apply. See *Owner's Manual* and toyota.com/connected-services/ for additional limitations and details. To learn about Toyota's data collection, use, sharing and retention practices, please visit <https://www.toyota.com/privacypvts/>. **38.** The Destination Assist trial period is at no extra cost and begins on the original date of purchase or lease of a new vehicle. After the trial period expires, enrollment in a paid subscription is required to access the service. **39.** JBL® and Clari-Fi® are registered trademarks of Harman International Industries, Inc. **40.** Toyota Safety Sense™ effectiveness is dependent on many factors including road, weather and vehicle conditions. Drivers are responsible for their own safe driving. Always pay attention to your surroundings and drive safely. See *Owner's Manual* for additional limitations and details. **41.** The Pre-Collision System (PCS) with Pedestrian Detection (PD) is designed to determine if impact is imminent and help reduce impact speed and damage in certain frontal collisions involving a vehicle or a pedestrian. PCS w/PD is not a substitute for safe and attentive driving. System effectiveness depends on many factors, such as speed, size and position of pedestrian or bicyclist and weather, light and road conditions. See *Owner's Manual* for additional limitations and details. **42.** Lane Tracing Assist (LTA) is designed to read visible lane markers and detect other vehicles under certain conditions when DRCC is engaged. When potential lane departure is detected, LTA provides a visual warning and either an audible alert or vibration in the steering wheel and can apply a slight steering force. It is not a collision-avoidance system or a substitute for safe and attentive driving. Effectiveness is dependent on many factors including road, weather and vehicle conditions. LTA not available on manual transmissions. See *Owner's Manual* for additional limitations and details. **43.** Automatic High Beams operate at speeds above 25 mph. Factors such as a dirty windshield, weather, lighting and terrain limit effectiveness, requiring the driver to manually operate the high beams. See *Owner's Manual* for additional limitations and details. **44.** Vehicle Stability Control is an electronic system designed to help the driver maintain vehicle control under adverse conditions. It is not a substitute for safe and attentive driving practices. Factors including speed, road conditions, weather and driver steering input can all affect whether VSC will be effective in preventing a loss of control. See *Owner's Manual* for additional limitations and details. **45.** Brake Assist is designed to help the driver take advantage of ABS and is not a substitute for safe driving practices. Braking effectiveness also depends on proper vehicle maintenance, tire and road conditions. See *Owner's Manual* for additional limitations and details. **46.** Smart Stop Technology® operates only in the event of certain contemporaneous brake and accelerator pedal applications. When engaged, the system will reduce power to help the brakes bring the vehicle to a stop. Factors including speed, road conditions and driver input can all impact stopping distance. Smart Stop Technology® is not a substitute for safe and attentive driving and does not guarantee instant stopping. See *Owner's Manual* for additional limitations and details. **47.** The universal tablet holder is intended for passengers only. Drivers should always be sure to obey traffic regulations and maintain awareness of the road and traffic conditions at all times. Use of aftermarket accessories may pose an increased risk of injury to occupants in the event of an accident. Tablet sold separately. **48.** Airbag systems are Supplemental Restraint Systems and are designed to inflate only under certain conditions and in certain types of severe collisions. To decrease the risk of injury from an inflating airbag, always wear seatbelts and sit upright in the middle of the seat as far back as possible. Do not put objects in front of an airbag or around the seatback. Do not use a rearward-facing child seat in any front passenger seat. See *Owner's Manual* for additional limitations and details. **49.** Building and/or parking structures may limit system effectiveness. Stolen vehicle police report required to use Stolen Vehicle Locator. For additional assistance contact the Toyota Customer Experience Center at 1-800-331-4331. **50.** Requires adequate cellular coverage and GPS signal strength. May not work in all areas. Service may vary by vehicle and region. See Toyota Dealer for details and exclusions. **51.** Whiplash-Injury-Lessening front seats can help reduce the severity of whiplash injury in certain rear-end collisions. **52.** The Tire Pressure Monitor System alerts the driver when tire pressure is critically low. For optimal tire wear and performance, tire pressure should be checked regularly with a gauge; do not rely solely on the monitor system. See *Owner's Manual* for additional limitations and details. **53.** Hill Start Assist Control is designed to help minimize backward rolling on steep ascents. It is not a substitute for safe driving judgment and practices. Factors including speed, grade, surface conditions and driver input can all affect whether HAC will be effective in preventing a loss of control. See *Owner's Manual* for additional limitations and details. **54.** Downhill Assist Control is designed to help driver maintain vehicle control and speed on steep, downhill descents and is not a substitute for safe driving judgment and practices. Factors including speed, grade, surface conditions and driver input can affect the DAC's ability to prevent loss of control. See *Owner's Manual* for additional limitations and details. **55.** The engine immobilizer is a state-of-the-art anti-theft system that is initiated when you insert your key into the ignition switch or bring a Smart Key fob into the vehicle. The engine will only start if the code in the transponder chip inside the key/fob matches the code in the vehicle's immobilizer. The transponder chip is embedded in the key/fob and can be costly to replace. If you lose a key or fob, your Toyota dealer can help or go to www.aloa.org to find a qualified locksmith in your area who can perform high-security key service. **56.** Do not rely exclusively on the Rear Cross-Traffic Alert system. Always look over your shoulder and use your mirrors to confirm rear clearance. There are limitations to the function, detection and range of the system. See *Owner's Manual* for additional limitations and details. **57.** When the system is on, Electric Parking Brake is designed to engage the Parking Brake under limited conditions. It may not hold the vehicle under all conditions. See *Owner's Manual* for additional limitations and details. **58.** Before towing, confirm Stop and Start Engine System is disengaged (V6 gas models only). **59.** At speeds of 9 mph or less, Front and Rear Parking Assist with Automated Braking (PA w/AB) is designed to assist drivers in avoiding potential collisions with nearby static objects when the vehicle is in Drive or Reverse and approaching crossing vehicles when the vehicle is in Reverse. Do not overly rely on PA w/AB. Always look around outside the vehicle and use mirrors to confirm clearance. Certain vehicle and environmental factors, including an object or vehicle's shape, size and composition, may affect the system's effectiveness. See *Owner's Manual* for additional limitations and details. **60.** Predictive Fuel-Efficient Drive systems require a destination entry in the navigation system for use. See *Owner's Manual* for details. **61.** Meets Tier-2/Bin-3 Federal emissions standard. **62.** Hybrid vehicle battery expected life is 150,000 miles based on laboratory bench testing. **63.** Cargo and load capacity limited by weight and distribution. Always properly secure cargo and cargo area. **64.** Before towing, confirm your vehicle and trailer are compatible, hooked up and loaded properly and that you have any necessary additional equipment. Do not exceed any Weight Ratings and follow all instructions in your *Owner's Manual*. The maximum you can tow depends on base curb weight plus the total weight of any cargo, occupants, and added vehicle equipment. "Added vehicle equipment" includes additional standard/optional equipment and accessories added by the manufacturer, dealers, and/or vehicle owners. The only way to be certain of your vehicle's exact curb weight is to weigh your vehicle without passengers or cargo. Calculated with the new SAE J2807 method. Installation of a tow hitch receiver will disable the touchless sensor in your vehicle's power rear-door liftgate and sensor operation setting should be turned off. See *Owner's Manual* for additional limitations. **65.** Trailer-Sway Control (TSC) is an electronic system designed to help the driver maintain vehicle control under adverse conditions. It is not a substitute for safe driving practices. Factors including speed, road conditions, weather and driver steering input can all affect whether TSC will be effective in preventing a loss of control. See *Owner's Manual* for additional limitations and details. **66.** 2020 EPA-estimated mileage. Actual mileage will vary. **67.** 2020 preliminary mpg estimates determined by Toyota. EPA estimates not available at time of posting. Actual mileage will vary. **68.** Extra-cost color. **69.** 2020 Highlander vs. 2020 competitors. Based on manufacturers' data as of 9/19/19. **70.** Always drive safely and obey traffic laws. **71.** 2020 Highlander Hybrid AWD preliminary 35 city/35 hwy/35 combined mpg estimates determined by Toyota. Actual mileage will vary. 2020 Highlander Hybrid vs. 2020 competitors based on manufacturers' data as of 9/19/19. **72.** CAUTION! Pedestrians, bicyclists, and other vehicles may not hear your vehicle approach when driving in EV Mode. Quick acceleration and braking, temperature, hybrid battery charge and other road and vehicle conditions may prevent or limit usage or effectiveness of EV Mode. Driving speed and distance is limited. See *Owner's Manual* for details. **73.** iPhone® is a registered trademark of Apple Inc. All rights reserved. **74.** Android is a trademark of Google LLC. **75.** This floor mat/floor liner was designed specifically for use in your model and model year vehicle and SHOULD NOT be used in any other vehicle. To avoid potential interference with pedal operation, each mat/liner must be secured with its fasteners. Do not install a floor mat/floor liner on top of an existing floor mat/floor liner. **76.** Genuine Toyota Paint Protection Film by 3M™ is designed for specific sections of the vehicle most prone to chipping and may vary depending on vehicle model. Select applications may require an additional charge. Toyota Genuine Accessory Warranty only applies when installation is performed by a trained Toyota-approved installer. See Toyota dealer for details.



Toyota strives to build vehicles to match customer interest and thus they typically are built with popular options and option packages. Not all options/packages are available separately and some may not be available in all regions of the country. See toyota.com for information about options/packages commonly available in your area. If you would prefer a vehicle without any or with different options, contact your dealer to check for current availability or the possibility of placing a special order. Color(s) depicted may vary based on multiple factors, including ambient lighting and the format in which it is being viewed (e.g., computer, mobile device or print).

Note: Highlander Hybrid models are not designed to be driven off-road. Toyota Highlander is designed to meet most off-road driving requirements. Abusive use may result in bodily harm or damage. Toyota encourages responsible operation to protect you,

your vehicle and the environment. Seatbelts should be worn at all times. Please do not allow passengers to ride in the cargo area. Towing hitch receivers/ball mount kits are not intended to provide crash protection.

For details on vehicle specifications, standard features and available equipment in your area, contact your Toyota dealer. A vehicle with particular equipment may not be available at the dealership. Ask your Toyota dealer to help locate a specifically equipped vehicle.

All information presented herein is based on data available at the time of posting, is subject to change without notice and pertains specifically to mainland U.S.A. vehicles only. Vehicles shown may be prototypes and/or shown with options. Actual models may vary.

WARRANTIES

Every Toyota Car, Truck and SUV is built to exceptional standards. And that's not idle boasting. We back it up with these Limited Warranty Coverages:

Basic: 36 months/36,000 miles (all components other than normal wear and maintenance items).

Hybrid-Related Component Coverage: Hybrid-related components, including the battery control module, hybrid control module and inverter with converter, are covered for 8 years/100,000 miles. Refer to applicable *Warranty and Maintenance Guide* for details.

Hybrid Battery: HV battery is covered for 10 years or 150,000 miles, whichever comes first. Warranty coverage is subject to terms and conditions. Refer to applicable *Warranty and Maintenance Guide* for details.

Powertrain: 60 months/60,000 miles (engine, transmission/transaxle, drive system, seatbelts and airbags).

Rust-Through: 60 months/unlimited miles (corrosion perforation of sheet metal).

Emissions: Coverages vary under Federal and California regulations. Refer to applicable *Warranty and Maintenance Guide* for details.

Accessories: For Genuine Toyota Accessories purchased at the time of the new vehicle purchase, the Toyota Accessory Warranty coverage is in effect for 36 months/36,000 miles from the vehicle's in-service date, which is the same coverage as the Toyota New Vehicle Limited Warranty.

For Genuine Toyota Accessories purchased after the new vehicle purchase the coverage is 12 months, regardless of mileage, from the date the accessory was installed on the vehicle, or the remainder of any applicable new vehicle warranty, whichever provides greater coverage.

You may be eligible for transportation assistance if it's necessary that your vehicle be kept overnight for repairs covered under warranty. Please see your authorized Toyota dealership for further details.

For complete details about Toyota's warranties, please visit www.toyota.com, refer to the applicable *Warranty and Maintenance Guide* or see your Toyota dealer.



For Toyota Mobility program details, go to www.toyota.com/mobility or call the Toyota Customer Assistance Center at 1-800-331-4331

